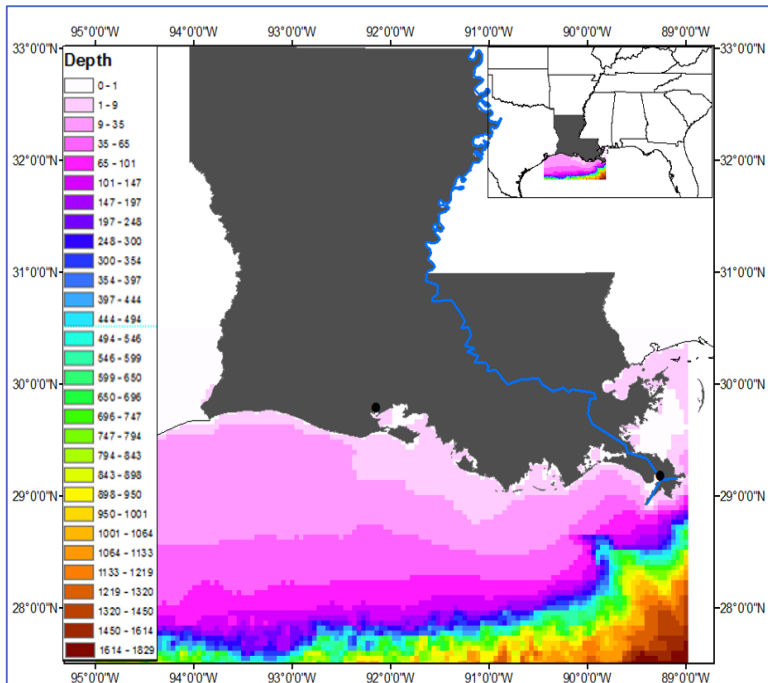


Ecospace

Model area will get updated bathymetry/topography info

- Boundaries?
- Grid cell size? (currently 5 km²)



New spatial-temporal framework will be used to include multiple environmental driver layers

Current	More options
Bottom Dissolved oxygen	Temperature
Chlorophyll a	Salinity
Depth	Phytoplankton*
Simple salinity zones	Zooplankton*
	Primary production
	Detritus*
	Other?
	GRP**

*These are groups in the model too, they could be used to replace, to calibrate, or to validate EwE calculated values

**available for some species only

Which species/groups should be added, removed, split, or aggregated?

Marine Mammals

Tunas

Birds

Atlantic

Cutlassfish²

Lizardfish

Coastal sharks²

Mackerel

Seatrout³

Red Snapper³

Groupers³

Other Snappers

Red Drum⁵

Rays & Skates²

Flounders

Pompano

Atlantic Bumper

Scad

Atlantic Croaker²

Catfish

Spot

Squid

Pinfish

Porgies

Anchovy

Menhaden²

Other Clupeids

Mulletts

Sea Turtles

Small Forage Fish

Jellyfish

Blue Crab

Brown Shrimp²

White Shrimp²

Pink Shrimp²

Other Shrimp

Benthic Crabs

Benthic Invertebrates

Zooplankton

Benthic Algae/Weeds

Phytoplankton

Detritus

60 groups in the model now

x ontogenetic splits included